

# NetaTank™ Water Tanks

NetaTank™ is a complete water tank solution, available with all relevant components, including covers, liners, steels, enclosures, and outlets. Netafim™ water tanks address a wide range of applications such as fresh, treated, grey, recycled, poor-quality waters as well as rainwater.



Complete solution



Compact



Easy installation

## / Benefits & Features

- **Complete solution** All components are designed to work together to create a robust and reliable water tank solution
- **Compact** Reduces shipping costs
- **Easy to install** User-friendly installation manual provided
- **Reliable system** Reduces maintenance labor and cost
- **Modular design** To meet variety of requirements and tanks' sizes
- **Fast on-site service** Thanks to our extensive local and global support
- **Unique liners** Proven durability and resistance to wide range of temperatures



# / Specifications

- **High Resistance to low-quality/saline water** – (EC=7)
- **High resistance to corrosion**– Corrugated hot dip galvanized steel
- **High Resistance to chlorine** – (Cl) content of up to 4 ppm (other resistances to chlorine, by special order)
- **Suitable for recycled water** – from greenhouses, water treatment systems, fire extinguishing systems, etc.
- **Resistance to UV** – from direct sunlight when tank is uncovered
- **Warranty** – 8 years, graduated
- **Liner Repair** – easy fix

## → Typical Applications

- ✓ Agriculture - greenhouse and open field
- ✓ Livestock farming
- ✓ Pisciculture (fish farming)
- ✓ Rainwater harvesting
- ✓ Landscape irrigation
- ✓ Sports/Golf irrigation

## → Components

### Tanks

- ✓ Corugated galvanized steel plates:
  - Short panels**
    - **Length:** 2.11m/6.92ft (compatible with stretch, floating cover and / or metal cover)
    - **Galvanization:** Magizinc - Equivalent to Z600 galvanized steel. (Bottom coating epoxy optional)
    - **Optional:** Epoxy powder-coated steel plates

### Liners

- ✓ E-610 - General purpose; Resistance to low temperature in storage down to -35°C (-31°F), Netafim™ I.B.;  
**Color:** Ice-blue
- ✓ [E-610 VLT, Resistance to low temperature in storage down to -55°C (-67°F), can be supplied by special order]  
E-305-A - Potable water FDA approved;  
**Color:** Grey

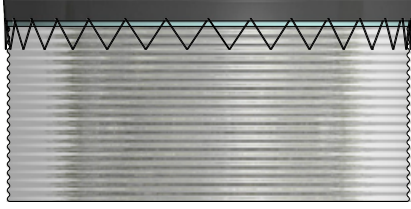
## → Specification

Test & Method	E-610		E-305-A	
	Metric Standard	US Standard	Metric Standard	US Standard
Fabric Type	PES 1100 DTX	PES 1000 DEN	PES 1100 DTX	PES 1000 DEN
Polymer	PVC			
Total Weight ASTM D 751	610gr/m <sup>2</sup>	18oz/yd <sup>2</sup>	740gr/m <sup>2</sup>	21.8oz/yd <sup>2</sup>
Breaking Strength (Strip) ASTM D 751 Procedure B	250/230kg / 5cm	285/275lbs/in	280/260kg/5cm	308/286lbs/in
Resistance to High Temp.	35°C	95°F	35°C	95°F
Resistance to Low Temp. in Water Storage	<-30°C	<-22°F	<-30°C	<-22°F
Tearing Strength	128kg	282lb	128kg	282lb

\*No water consumption during freeze conditions

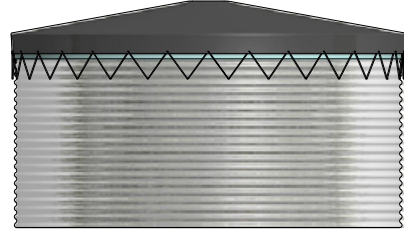
→ NetaTank™ Covers

Stretch Cover



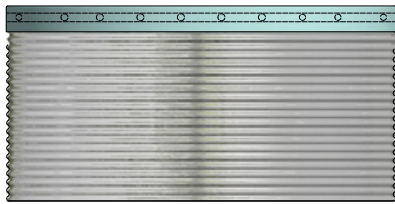
Diameter: ≤ 2.68 - 9.38m  
Panel Length: 2.11m/6.92ft

Stretch Cover with Central Post



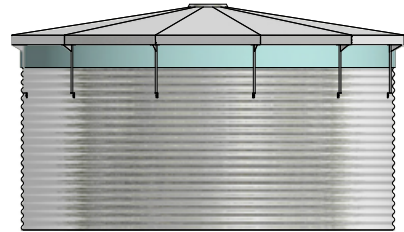
Diameter: ≤ 8.04 - 14.74m  
Panel length: 2.11m/6.92ft

Floating Cover



Diameter: >10.05m  
Panel length: 2.11m/6.92ft

Metal Cover



Diameter: ≤ 12.06m  
Panel Length: 3.17m/10.4ft

For tank diameter from 10.05m and above, a reinforcing ring must be used.



Reinforcement ring installation guide can be downloaded from Netafim's website

→ Water Outlet

Water outlet located at the bottom of the water tank.

mm	32-75	90-225	250-350	400-500
inch	1¼-2½	3-8	10-14	16-20

\* Other sizes of water outlet can be supplied by special order. can be supplied with as many water outlets as needed, by special order.

Engineering and Planning Tools

- ✓ A configurator for simple, easy, tailor-made configuration of the desired product is available. For more information contact Netafim™'s [product manager](#)
- ✓ Comprehensive installation manual for straightforward installation

→ **Water Tank Volumes** for Tension Covers (compatible with stretch or floating cover)

Metric Standard (m<sup>3</sup>)

Diam. (m)	Height (m)				
	1.55	2.31	3.07	3.83	4.59
2.68	9	13	17	22	26
3.35	14	20	27	34	41
4.02	20	29	39	49	58
4.69	27	40	53	66	79
5.36	35	52	69	87	104
6.03	44	66	88	109	131
6.70	55	81	108	135	162
7.37	66	98	131	164	196
8.04	79	117	156	195	233
8.71	92	138	183	228	274
9.38	107	160	212	265	318
10.05	123	183	244	304	364
10.72	140	208	277	346	415
11.39	158	235	313	390	468
12.06	177	264	351	438	525
12.73	197	294	391	488	580
13.40	218	325	433	540	648
14.07	240	359	477	596	714
14.74	264	394	524	654	784
15.41	288	430	573	715	857
16.08	314	469	623	778	933
16.75	341	509	677	844	1,012
17.42	369	550	732	913	
18.09	397	593	789	985	
18.76	427	638	849	1,059	
19.43	458	684	910	1,136	
20.10	491	732	974	1,216	
20.77	524	782	1,040		
21.44	558	833	1,108		
22.11	594	886	1,179		
22.78	630	941	1,251		
23.45	668	997	1,326		
24.12	706	1,054	1,403		
24.79	746	1,114	1,482		
25.46	787	1,175			
26.13	829	1,237			
26.80	872	1,302			
27.47	916	1,368			
28.14	962	1,435			
28.81	1,008	1,504			
29.48	1,055	1,575			
30.15	1,104	1,647			

US Standard (USG)

Diam. (ft.)	Height (ft.)				
	5.09	7.58	10.07	12.57	14.96
8.80	2,378	3,434	4,491	5,812	6,868
11.00	3,698	5,283	7,133	8,982	10,831
13.19	5,283	7,661	10,303	12,944	15,322
15.39	7,133	10,567	14,001	17,435	20,870
17.59	9,246	13,737	18,228	22,983	27,474
19.78	11,624	17,435	23,247	28,795	34,607
21.98	14,529	21,398	28,531	35,663	42,796
24.18	17,435	25,889	34,607	43,324	51,778
26.38	20,870	30,908	41,211	51,514	61,552
28.58	24,304	36,456	48,343	60,231	72,383
30.77	28,266	42,268	56,004	70,006	84,007
32.97	32,493	48,343	64,458	80,308	96,159
35.17	36,984	54,948	73,176	91,404	109,631
37.37	41,739	62,080	82,686	103,027	123,632
39.57	46,758	69,741	92,724	127,595	138,690
41.77	52,042	77,667	103,291	128,916	153,220
43.96	57,590	85,856	114,386	142,653	171,183
46.16	63,401	94,838	126,010	157,446	188,619
48.36	69,741	104,084	138,426	172,768	207,119
5.56	76,082	113,594	151,371	188,883	226,395
52.76	82,950	123,897	164,579	205,526	246,472
54.95	90,083	134,464	178,844	222,961	267,342
57.15	97,479	145,295	193,374	241,189	
59.35	104,876	156,654	208,432	260,209	
61.55	112,801	168,542	224,282	279,758	
63.75	120,991	180,694	240,397	300,099	
65.94	129,708	193,374	257,304	321,233	
68.14	138,426	206,582	274,739		
70.34	147,408	220,055	292,703		
72.54	156,918	234,056	311,459		
74.74	166,428	248,586	330,479		
76.94	176,467	263,379	350,292		
79.13	186,505	278,437	370,633		
81.33	197,072	294,288	391,503		
83.53	207,903	310,402			
85.73	218,999	326,781			
87.93	230,358	343,952			
90.12	241,982	361,387			
92.32	254,133	379,087			
94.52	266,285	397,315			
96.72	278,701	416,071			
98.92	291,646	435,091			

→ **Water Tank Volumes** for Metal Covers

Metric Standard (m<sup>3</sup>)

Diam. (m <sup>3</sup> )	Height (m)		
	3.07	3.83	4.59
2.68	17	21	26
3.35	27	33	40
4.02	39	48	58
4.69	53	66	79
5.36	69	86	104
6.03	87	109	131
6.70	108	135	162
7.37	131	164	197
8.04	156	195	234
8.71	183	229	275
9.38	212	266	319
10.05	244	305	366
10.72	277	347	416
11.39	313	392	468
12.06	351	439	527

US Standard (USG)

Diam. (ft.)	Height (ft.)		
	10.07	12.57	15.06
9	4,491	5,548	6,868
11	7,133	8,717	10,566
13	10,302	12,680	15,322
15	14,001	17,435	20,869
18	18,227	22,718	27,474
20	22,982	28,795	34,607
22	28,530	35,663	42,796
24	34,606	43,324	52,041
26	41,210	51,514	61,816
29	48,343	60,495	72,647
31	56,004	70,269	84,270
33	64,457	80,572	96,686
33	73,175	91,667	109,895
37	82,686	103,555	123,632
40	92,724	115,971	139,218